

Rimersburg Borough Municipal Authority
Engineer's Report
December 4, 2019

WWTP & Collection System Upgrades

Influent Flow Meter

DDS flow meter installed on 11/4 – cell signal not allowing automatic data downloads to website
EADS will download meter and install new 4G antenna (week of Dec 16th)

Effluent Flow Meter – EADS reinstalled and calibrated original meter on 11/27

– rental meter was removed and ready to return to HACH/Precision Instruments

CDBG Grant Application

Monterey Rd WaterLine – approved by County for \$123,480

DCED Application submitted on 11/22 by County Planning Office – awards announced in January
Construction – Sept through Nov 2021

New Water Quality Monitoring Requirements

Uninterrupted System Service Plan (USSP)

Corrective Action Plan needs to be submitted by 2/19/20 (will require available backup generator)
Authority to explore options for a used generator

Lead & Copper Sampling Plan – needs to be revised per Melissa Crow (to be discussed at next inspection)

Water Plant SCADA System (Borough will fund repair)

Cambria Systems programmer replaced the HMI unit on 11/29

Frank working on menu setup/troubleshooting with Cambria

Ridgeview Drive Sewer

Doug Frampton to start work on 12/5 (requesting completion date of 1/17)

Sloan Street Sewer – see revised mapping

Revised plan with drop manhole & shallower piping provided to Frank and Doug Frampton

Doug Frampton provided cost estimates on 12/4

Rider Road Water Meter – 2" private line

Frank received cost estimate of \$5,000 for 2" meter & meter pit

A 3/4" meter removed from Carwick Rd is also available – discuss

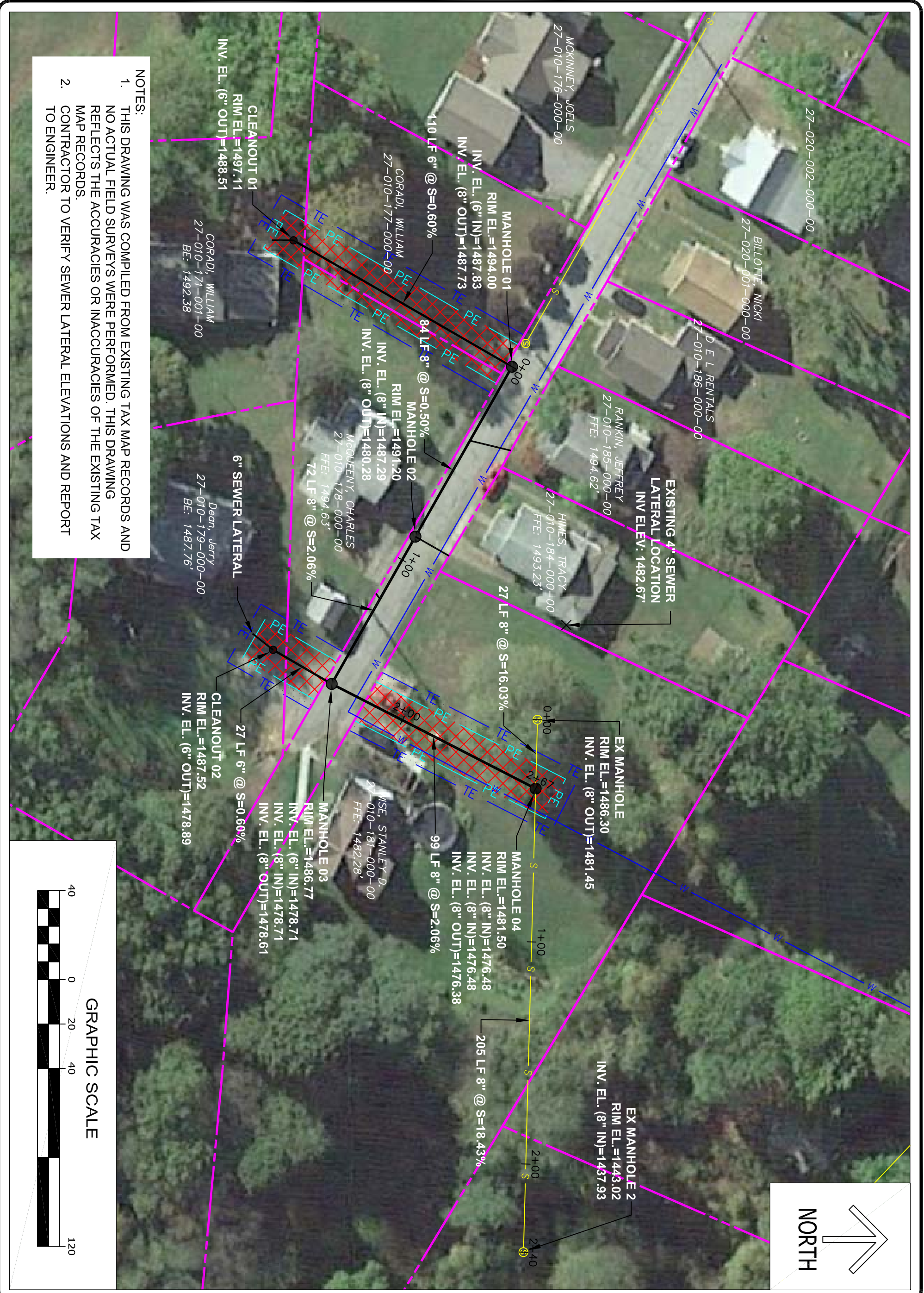
Rules & Regs Updates – revisions attached

Latest revisions & Developers Agreements emailed to Dana

Small Water & Sewer Grant – Main/Chestnut St Waterline Project (Dec 13th deadline)

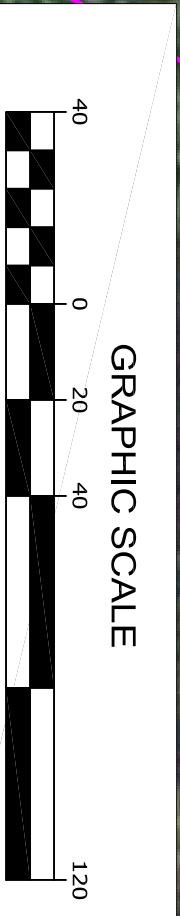
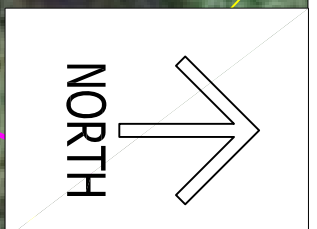
Submitted to DCED on 11/30 (Web ID# 8360578, Project ID# 2019-11-30-1667)

Awards to be announced in March



NOTES:

1. THIS DRAWING WAS COMPILED FROM EXISTING TAX MAP RECORDS AND NO ACTUAL FIELD SURVEYS WERE PERFORMED. THIS DRAWING REFLECTS THE ACCURACIES OR INACCURACIES OF THE EXISTING TAX MAP RECORDS.
2. CONTRACTOR TO VERIFY SEWER LATERAL ELEVATIONS AND REPORT TO ENGINEER.



Seal	
Date	

No.	Sheet Revisions	Date

Scale AS NOTED
 Date 9-10-19
 Drawn By DJL
 Checked By KTS
 Project No. 0220-19-091
 File No. 19091-SLOAN ST

phone: 814.445.6551 fax: 814.443.2748
 www.eadsgroup.com
 WITH OFFICES IN:
 PENNSYLVANIA / MARYLAND / WEST VIRGINIA

RIMERSBURG BOROUGH MUNICIPAL AUTHORITY
SLOAN STREET SEWER PROJECT

SLOAN STREET PLAN VIEW

Drawing No.
1



MANHOLE 01
 RIM EL.=1494.00
 INV. EL. (6" IN)=1487.83
 INV. EL. (8" OUT)=1487.73

MANHOLE 02
 RIM EL.=1491.20
 INV. EL. (8" IN)=1487.29
 INV. EL. (8" OUT)=1480.28

MANHOLE 03
 RIM EL.=1486.77
 INV. EL. (6" IN)=1478.71
 INV. EL. (8" IN)=1478.71
 INV. EL. (8" OUT)=1478.61

MANHOLE 04
 RIM EL.=1481.50
 INV. EL. (8" IN)=1476.48
 INV. EL. (8" IN)=1476.48
 INV. EL. (8" OUT)=1476.38

Sloan St. San. Sewer
 HORIZ SCALE: 1"=30'
 VERT SCALE: 1"=10'

Drawing No.
2

**RIMERSBURG BOROUGH
 MUNICIPAL AUTHORITY
 SLOAN STREET SEWER PROJECT**

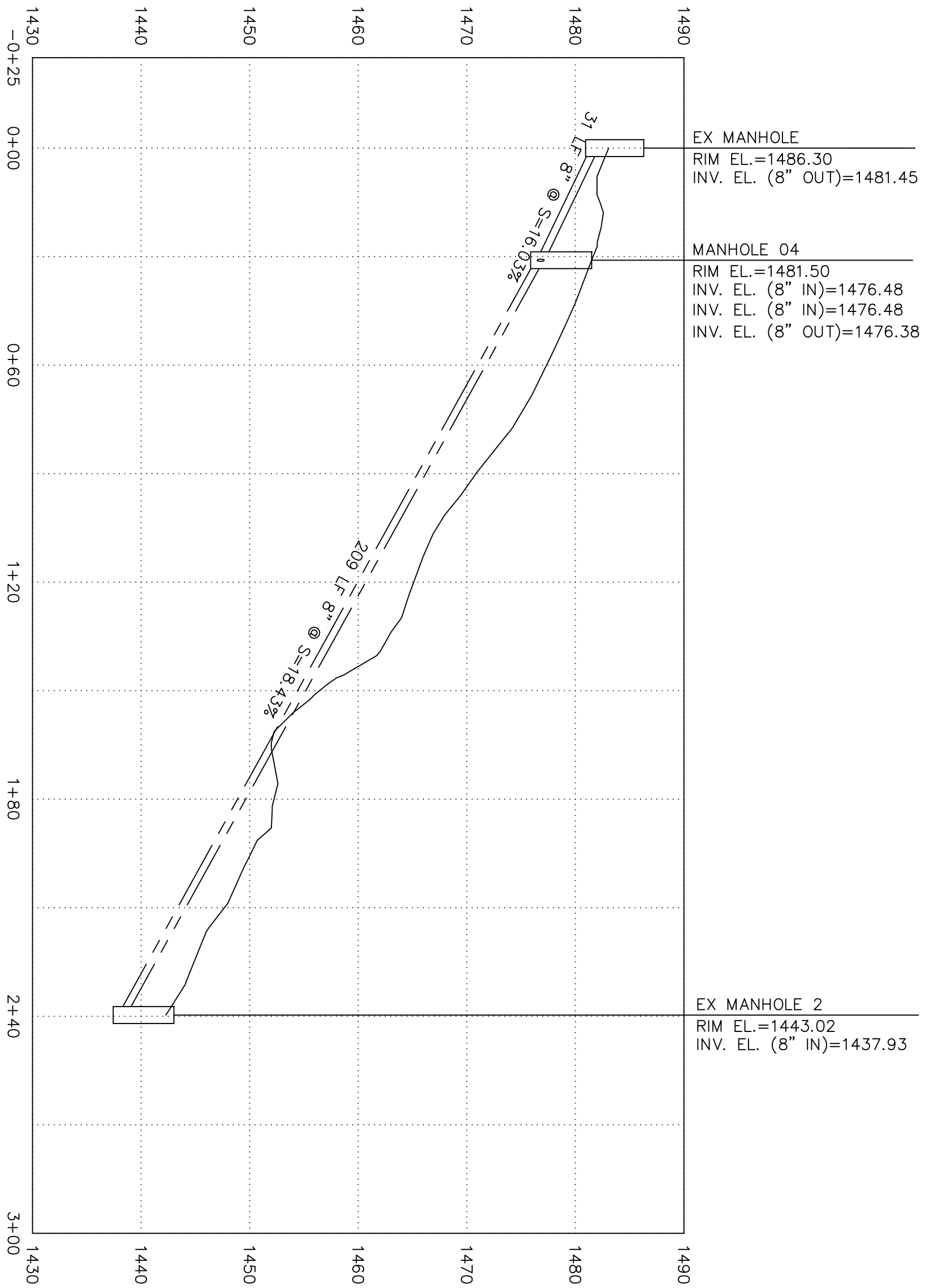
SLOAN STREET PLAN VIEW



Scale	AS NOTED
Date	9-10-19
Drawn By	DJL
Checked By	KTS
Project No.	0220-19-091
File No.	19091-SLOAN ST

No.	Sheet Revisions	Date

Seal
 Date



Existing San. Sewer
 HORIZ SCALE: 1"=30'
 VERT SCALE: 1"=10'

Drawing No.
3

**RIMERSBURG BOROUGH
 MUNICIPAL AUTHORITY**
SLOAN STREET SEWER PROJECT

SLOAN STREET PLAN VIEW



Scale AS NOTED
 Date 9-10-19
 Drawn By DJL
 Checked By KTS
 Project No. 0220-19-091
 File No. 19091-SLOAN ST

No.	Sheet Revisions	Date

Seal
 Date